



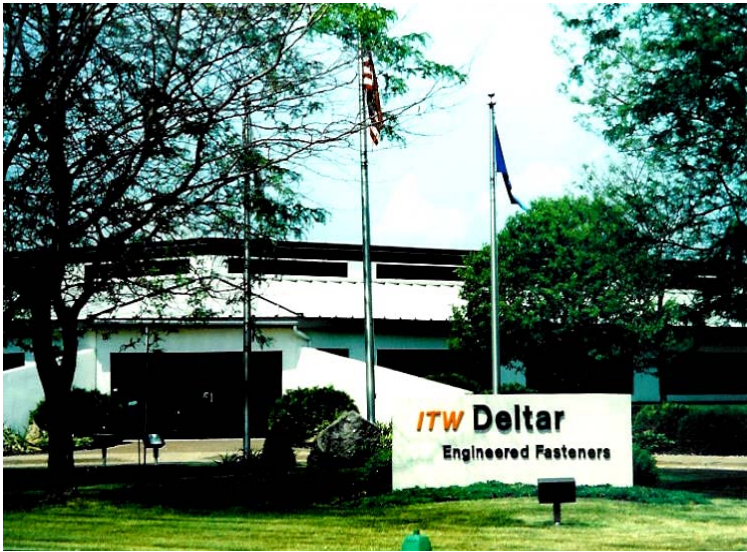
PRODUCTS, INC.

918 N. Union Street
Appleton, WI 54911
920-739-8685
or 1-800-221-6381
Fax: 920-739-8704

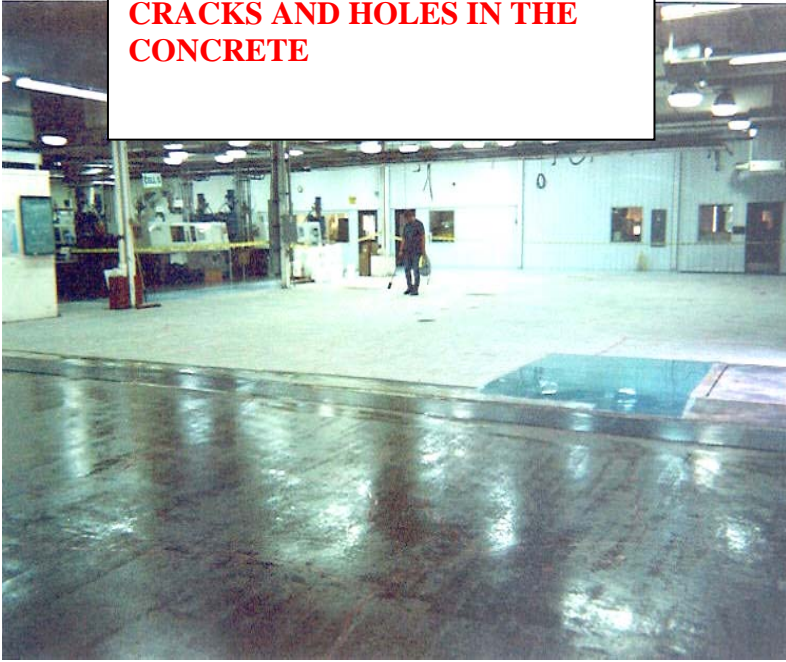
Email: CDPEPOXY@AOL.COM

Epoxy & fiberglass flooring, seamless fiberglass wall systems, sealers, high performance coating systems, and industrial cleaners

ITW DELTAR CORP CHIPPEWA FALLS, WI PRODUCTION AREA FLOOR RESURFACING JUNE 2003



**NOW THEIR PRIMARY PLANT
IN WISCONSIN ITW DELTAR
SEEKS TO IMPROVE IT'S
CUSTOMER IMAGE TO
VISITORS AND CUSTOMERS.
HERE WE ARE CLEANING,
ETCHING, CUTTING AND
FILLING MANY JOINTS, FACE
CRACKS AND HOLES IN THE
CONCRETE**





(CLOCKWISE FROM UPPER LEFT) NEXT THE #1013 PRIMER IS APPLIED FOR EXCELLENT ADHESION TO A POOR SURFACE. THIS IS FOLLOWED BY THE HIGH BUILD MID COAT OF 1300 COLOR MATCHED TO ITW'S CORPORATE COLOR – ITW GREEN .. OF COURSE -IS APPLIED TO SMOOTH THE SURFACE. LASTLY THE HIGH GLOSS #1300 WEAR AND DRESS COAT IS APPLIED – AGAIN IN ITW GREEN- TO GIVE THE SHOW PLACE APPEARANCE THEY WANT THEIR VISITORS TO SEE OVER ALL THE AISLES AND IN THE NEW PRODUCTION AREA.

NEXT (VIEW CLOCK WISE FROM TOP LEFT) WE PRIME THE SURFACE WITH #1013 FOR EXCELELNT ADHESION- HERE HALF COMPLETED. ONCE CURED WE APPLY A HIGH BUILD COAT OF #3100 COLOR MATCHED TO THEIR CORPORATE COLOR – ITW GREEN.. OF COURSE- AND LASTLY WE TOP COAT WITH #1300 ITW GREEN FOR BOTH THE NEW PRODUCTION AREA AND FOR AISLES THROUGHOUT THE EXISTING PRODUCTOIN AREA GIVING VISITORS AN IMMEDIATE EXCELLENT IMPRESSOIN UPON ENTERING THE FACILITY.